

QI Analyst™ 4.2— SPC for the Enterprise



- ⌚ *QI Analyst gives manufacturers the ability to use real-time data to monitor, predict and make on-line adjustments for production quality and consistency.*
- ⌚ *QI Analyst can also leverage historical data from most sources, allowing manufacturers to transform common process data into valuable process information.*



PRODUCT POSITION

QI Analyst™ gives manufacturers the ability to use real-time data to monitor, predict and make on-line adjustments for production quality and consistency. QI Analyst can also leverage historical data from most sources, allowing manufacturers to transform common process data into valuable process information. So, whether the source is real-time data from InTouch, historical data from InSQL or any other ODBC or OLE DB-supported source, real-time or historical, QI Analyst will quickly analyze, plot and provide information about your processes. Combining ease of use, powerful analytical techniques, real-time communication and openness to most data sources, Wonderware's QI Analyst 4.2 is a complete SPC software system that empowers every member of your quality team. Comprehensive process capability analysis tells you what your process can do and superior process monitoring keeps you informed—in real time. Armed with critical information, you make the right changes to your process, at the right time. The results are dramatic—improved process performance, increased productivity and reduced costs—all leading to higher profits.

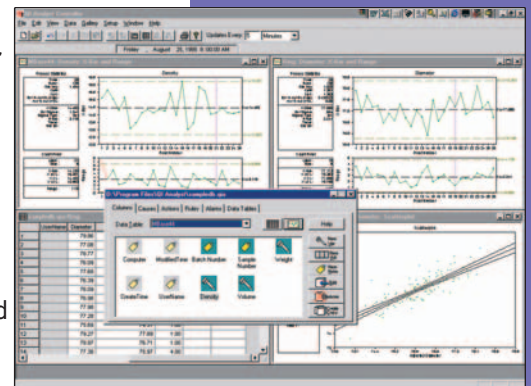
QI Analyst 4.2 provides real-time access to critical information from a common database, with the right analytical capabilities for every person. This immediate distribution of consistent information enables effective and timely decision-making across your quality team.

QI Analyst 4.2 consists of:

■ QI Analyst 4.2 Controller

- a full-featured version of the software allowing all core SPC activities (data entry, charting and statistic monitoring and alarming) as well as complete setup, configuration and administration capabilities. At least one Controller is required for each QI Analyst network. The Controllers are recommended for Power Users, Quality Engineers and Administrators.

■ **Analyst 4.2 Workstation** - typically used on the shop floor, the Workstation enables the core SPC activities of data entry, chart, and statistical calculations and alarming.



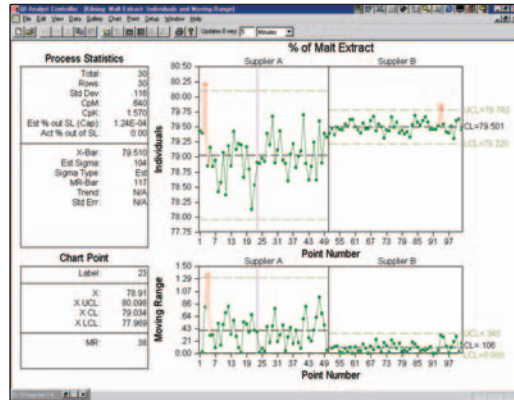
APPLICATIONS

Offering a comprehensive selection of SPC charts and powerful statistical procedures, QI Analyst 4.2 enables you to pinpoint variation immediately and keep your lines running smoothly. Powerful statistics automatically test data against statistical rules to detect trends, runs, patterns and outliers. When a rule violation occurs, QI Analyst immediately charts the point in red. In addition, customizable alarms alert you whenever unnatural variation occurs in your data, so you can solve problems immediately. For



Powering intelligent plant decisions in real time.

example, if a violation occurs, QI Analyst can call your pager or send you e-mail. You're never more than a glance or an alarm away from critical information.



WHAT'S NEW IN 4.2

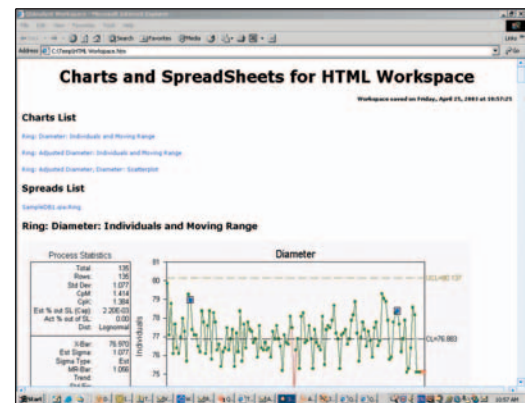
- A list of exciting features in QI Analyst 4.2:
 - Use CalClient (SuiteLink) to access real-time InTouch tag server data
 - Link to InSQL and most other data sources with automatic, dynamic updates
 - Calculated Columns - Define formulas for automatic calculation
 - Non-Normal Distribution Support - Lognormal, Folded Normal, Weibull, and Johnson distributions are supported for accurate statistics. Use the "Autofit" utility to determine how your data is distributed.
 - Chart Templates - Define standard "look and feel" of charts, greatly reducing the time needed to configure chart properties
 - Data Table Setup Wizard - With this Wizard, you can know very little about QI Analyst and still configure it for your own SPC needs
 - ActiveX charts - InTouch, Visual Basic and other standard ActiveX containers are supported
 - Alarms - Send alarms to the InTouch 7.11 or higher alarm database

FEATURES AND BENEFITS

Key capabilities:

- Simple setup of automated data acquisition from a number of sources:
 - Access real-time InTouch tag server data
 - Link to data in InSQL and most other data sources
 - Leverage OPC, which provides fast and reliable communication with shop floor equipment (QI Analyst is an OPC client)

- QI Analyst is COM-based, so programmatic control via OLE Automation is a great option for custom applications
- Works with a list of databases, eliminating the need for additional database software and minimizing IT setup. The list includes Microsoft SQL Server, Oracle, and Microsoft Access.
- Data Entry Assistant provides an interface for secure, manual data entry.
- Customizable alarms alert you to process variation immediately by, for example, sending a dynamic message to a pager.
- A large library of statistics can be displayed for the overall process and for any individual point.
- Limit sets allow the comparison of two sets of data, and are used to monitor process changes.
- Save charts and workspaces as HTML files. This feature allows simple reporting and distribution of the charts and tables of data.



Extensive Gallery of Charts

All standard SPC charts are included in QI Analyst:

Variable Charts

- X-bar and Range or Sigma
- X-individual and Moving Range
- Moving Average and Range or Sigma
- Cusum of Means or Individuals
- EWMA of Means or Individuals

Attribute Charts

- p
- np
- c
- u
- Defects Per Million Opportunities (DPMO)

Special Charts and Analysis Tools

- Run
- Histogram (view the data distribution)
- Scatterplot (view the correlation between characteristics)
- Paretos of Nonconformities, Causes, Actions or Rule Violations

Highly Configurable Rules

A number of industry specific sets of rules are included with QI Analyst such as Western Electric, AIAG, Juran, Hughes, Gitlow & Duncan. Design your own Rules, too—run rules, mixture rules and trends are easily created and applied to your operation.

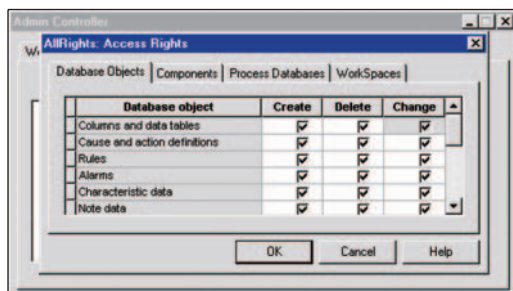
Real-time information for consistent decision making across your team

Manufacturing high quality products at a competitive price requires a team effort.

- QI Analyst connects your entire quality team with real-time communication, enabling everyone to proactively reduce variation—instead of just reacting to problems. In fact, with real-time data, QI Analyst can “predict” problems, before they cost you money and time!
- QI Analyst’s environment gives each member of your team immediate access to the same information via a central database—for consistent decision making throughout the organization.
- QI Analyst can deliver critical information to a wider audience via a database link so other departments and locations can view processes in real time.

Save time with central setup

QI Analyst saves time by simplifying central setup and preference changes for multiple users. By storing all your information—from setup preferences and user profiles to login data—on a central database, you only need to perform setup once. And, flexible security features give IT professionals more control, with tailored access that ensures each user gets the functionality they need.



INTEGRATION

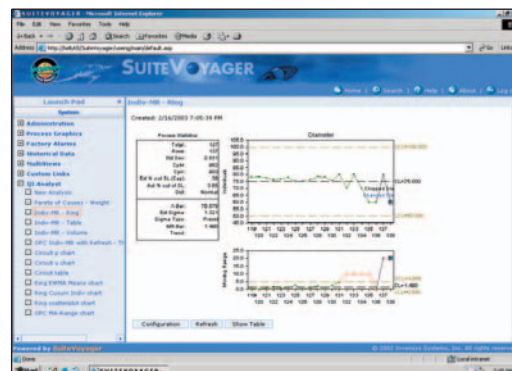
QI Analyst’s architecture provides for seamless integration into your current IT setup, minimizing the need for IT maintenance. The distributed architecture of this release puts real-time information at the fingertips of every person in your organization - without disrupting your current system. This new release empowers your team with immediate communication between multiple users and a simple interface for a variety of skill levels. The architecture of QI Analyst Enterprise means painless implementation – a seamless integration into your IT system, central setup and security and flexibility for customization. This release is designed for customers with large datasets, a complex IT structure, and a need for central database storage of all process data and definitions.

EASE OF USE

QI Analyst was created with ease of use as a primary goal, resulting in a product that is intuitive and is very easy to set up and use. With a Windows look and feel, there is usually more than one way to accomplish the same task. Customers across the globe rave about the ease of configuration and use. You don’t need to be an expert in statistics to use the product. Set up functional charts in minutes. The Data Table Setup Wizard will help you configure QI Analyst, even with very little knowledge of the product. Help is always just a click away, and an on-line tutorial and glossary of procedures and statistical formulas will get everyone up and running quickly.

QI Analyst for SuiteVoyager 2.0

QI Analyst for SuiteVoyager 2.0 is a plug-in application for SuiteVoyager 2.0 that allows a user with only an Internet browser -- Internet Explorer 6.0+ — to view QI Analyst charts and tables of data. Automatic and manual refresh present the latest charts and tables of data. With Web Parts, several charts and tables of data can be displayed in a single SuiteVoyager Multiview. Depending on the rights granted, a user can change chart properties and filters to display the desired charts and/or data. The only prerequisites are an existing QI Analyst network and a SuiteVoyager 2.0 web server with a LAN connection to the QI Analyst Databases.



EXAMPLES

As a true enterprise solution, QI Analyst is valuable across the organization's functional groups.

Quality Manager

The Quality Manager, using the Controller version of QI Analyst, can set up data tables (logical groupings of variables and/or attributes to be collected and analyzed), charts, statistical rules, and alarms to maintain real-time control of on-line manufacturing processes. On the off-line side, the Quality Manager can analyze "old" process data, manipulating limits and probing the data for useful process improvement information.

Plant Floor Operators

Using the QI Analyst Workstation, your Operators can watch the various process charts, enter data—manually or automatically - and can be notified with alarms if any of the charts they are monitoring violate any of the statistical rules. User "workspaces" can be set up for each operator so that the log-on automatically brings up that operator's charts, reestablishes data links, and begins charting and alarming.

Quality Personnel

The QI Analyst Workstation allows your inspection staff to take measurements, enter data automatically through their gages or enter data manually and verify that the variables or attributes entered yield a process that is stable and in control.

IT Manager

Using the Controller, the IT Manager can use QI Analyst to manage all user accounts. The Manager could set rights, define log-on profiles and maintain the QI Analyst "network" through a few, intuitive, easy-to-use dialog boxes. The flexible security model is a breeze, and since all the administrative data is maintained in one database, one person can easily manage the QI Analyst "network," regardless of how large it gets.

Corporate Personnel

Using QI Analyst for SuiteVoyager 2.0, a user can view QI Analyst charts and tables of data, with automatic and manual refresh.

SPECIFICATIONS

Database compatibility

- Microsoft Access® 97 & 2000
- Oracle® 7.0, 8.0, and 8i
- Microsoft® SQL Server® 7.0
- QI Analyst can provide real-time access to any database and can access to data in any ODBC or OLE DB-compliant source

System requirements

- Pentium or higher based computer
- 50MB of hard drive space
- Microsoft Windows 98(SE), NT, or 2000
 - 32MB RAM for Windows® 98 SE minimum
 - 64MB RAM for Windows NT/2000 minimum
- VGA monitor
- PCs connected through network operating system
- Additional RAM and CPU speed are recommended for stations monitoring many charts simultaneously or charts with more than 10,000 points.

QI Analyst supports Microsoft® Terminal Services for Windows 2000

Contact Wonderware or your local Distributor for information about software products for industrial automation.
Wonderware Corporation • 26561 Rancho Parkway South, Lake Forest, CA 92630 • Tel: (949) 727-3200 • Fax: (949) 727-3270
www.wonderware.com

©2003 Invensys Systems, Inc. All rights reserved. No part of the material protected by this copyright may be reproduced or utilized in any form or by any means, electronic or mechanical, including photocopying, recording, broadcasting, or by any information storage and retrieval system, without permission in writing from Invensys Systems Inc.

Wonderware, ActiveFactory, ArchestrA, Avantis, DT Analyst, FactoryFocus, FactoryOffice, FactorySuite, FactorySuite A², InBatch, InControl, InTouch, IndustrialRAD, IndustrialSQL Server, MaintenanceSuite, MuniSuite, QI Analyst, SCADAAlarm, SCADASuite, SuiteLink, and SuiteVoyager are trademarks of Invensys plc.

Microsoft and Windows are registered trademarks of Microsoft Corporation. All other brands may be trademarks of their respective owners.